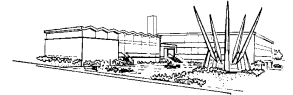






Immanuel-Kant-Schule



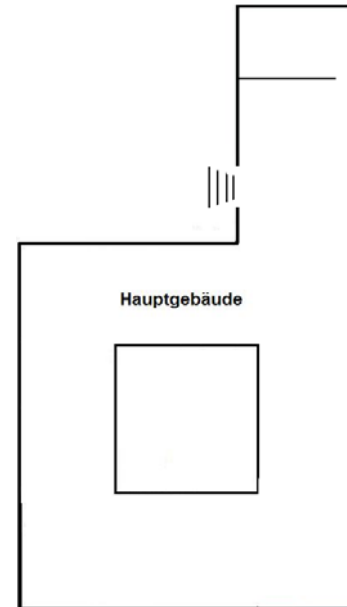
TdOT 6.2.2010

Obergeschoss (300er Raumnummern)



-  Physik / Astronomie
-  Smartboard / Ausbau der Nawi-Räume
-  Biologie
-  Sport

Raumplan



Trakt1
Raum 11 - 18

Trakt 2
Raum 21 - 28

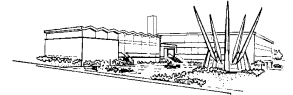
Trakt 3
Raum 31 - 38

Trakt 4
Raum 41 - 48

WC

Trakt 5
Oberstufentrakt

Immanuel-Kant-Schule

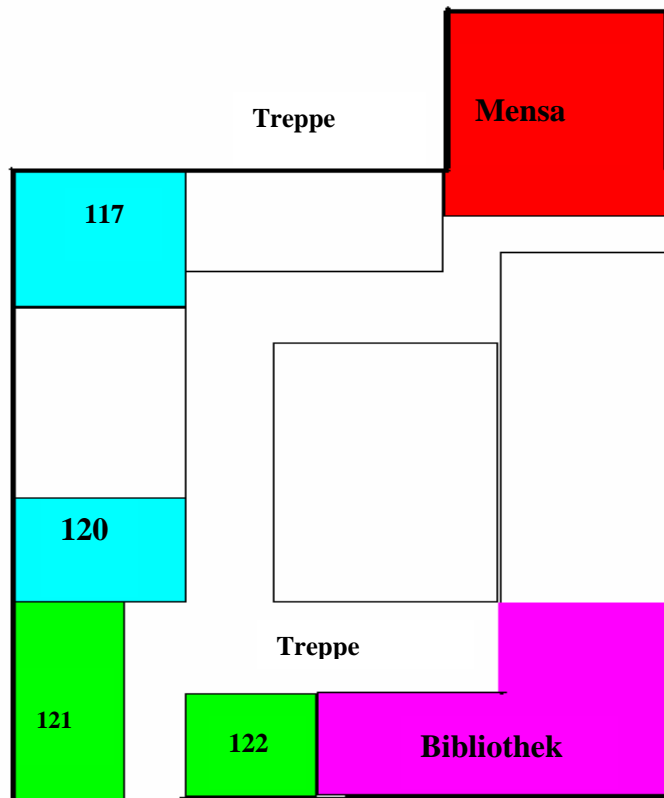


TdOT 6.2.2010

Untergeschoss (100er Raumnummern)

 Musik

 Kunst



Erdgeschoss (200er Raumnummern)

 Sprachen

 Chemie

 Vortrag des Schulleiters

